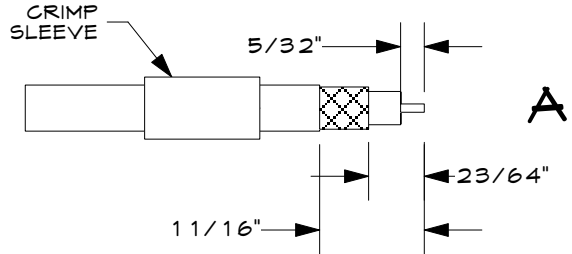
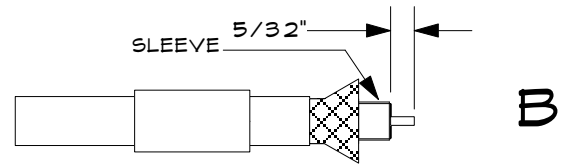


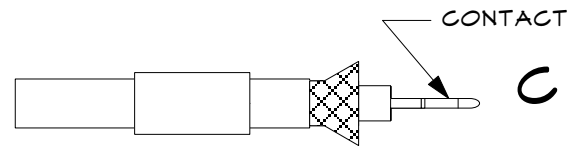
TERMINATION SPECS FOR KINGS # 2065-2-9 BNC
ON BELDEN 1505A CABLE



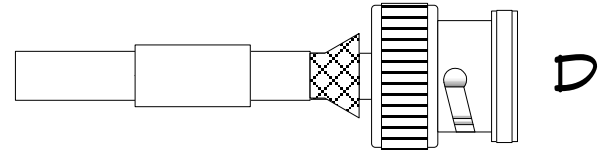
CUT CABLE END SQUARE, SLIDE CRIMP SLEEVE ONTO CABLE. USE EXCELITE TOOL # TO MAKE CUTS, REMOVE WASTE



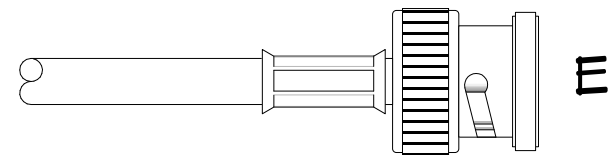
TRIM CENTER CONDUCTOR TO LENGTH. FAN OUT BRAID. SLIDE SLEEVE IN PLACE, UNDER BRAID



SLIDE CONTACT INTO POSITION AND CRIMP TO CENTER CONDUCTOR.



PUSH CONNECTOR OVER DIELECTRIC & UNDER BRAID UNTIL DIELECTRIC BOTTOMS IN CONNECTOR. JACKET MAY BE SLIT AXIALLY 1/4" IN TWO PLACES TO FACILITATE ENTRY OF THE K-GRIP



SLIDE SLEEVE AGAINST SHOULDER ON CONN BODY AND FROM BY CRIMPING

BNC-05

818-887-9123

g7tek

Part: BNC-05; REF DRAWING			
Dwg#:	BNC-05	Date:	12/31/00
Rev:		File:	BNC-05
Drawn:	TGW	Proj:	
Scale:	N/A		